

REV.	ECN NO.	APPD	DATE
A0	RELEASE	Jeff Zhou	07/23

Material

Pin: Brass, machined.
 Plating(Pin): Ni:80u"
 Au:Gold Flash.
 Plastic: PPS (UL 94 V-0)
 Black

Electrical

Current rating: ≥ 3 Amps/Contact max.
 Insulation: $< 1,000M \Omega$ at=100V.
 resistance: $30m \Omega$.

Mechanical

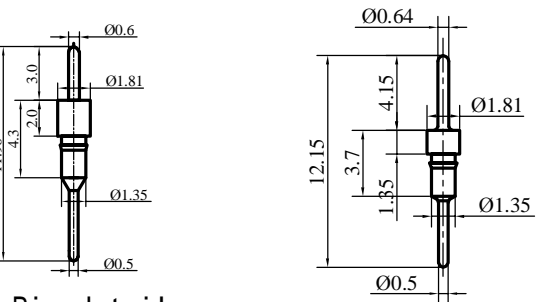
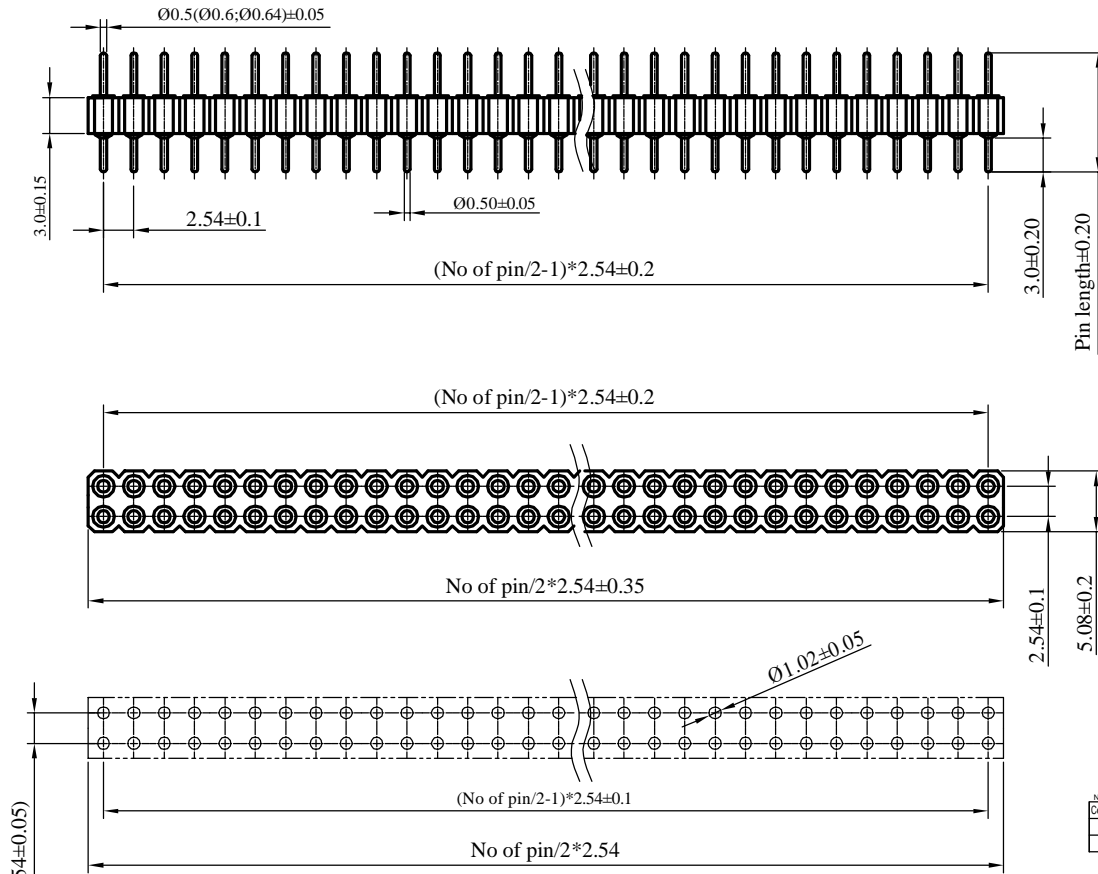
temperature: -40° to 105° .

Ordering Information

1 2 7 - X - X X X X - X X X X - X X X

Number of rows		Number of contacts		Pin Spacing - PITCH		Contacts type		Pin PLATED				Maximum width		Maximum length		Mark
Code	Definition	Code	Definition	Code	Definition	Code	Definition	Tin 200u"	8001	8011	6001	8101	Code	Definition	Code	Definition
1	Single row	01-40	Single row	1	2.54	0	Straight Pin	Gold Flash	8002	8012	6003	8102	3	3.0mm	1	PPS
2	Double row	02-80	Double row	2	2.0	1	Bend Pin	Gold 10u"	8003	8013	6002	8103	2	PBT	0	nextcon
3				3	7.62	2	SMT	Gold 15u"	8004	8014	6004	8104			1	No Mark
7				7	1.778											

P.C.B LAYOUT



Pin detail

X ± 0.3	UNITS	NAME:	SHENZHEN SHENG LONG FENG INDUSTRIAL CO., LTD. SHENZHEN JUNHAO EXACTITUDE INDUSTRY CO., LTD.
.X ± 0.2	M M	2.54mmPitch SIP Adapters DIP Pin Length 11.96(12.12, 15)mm	
.XX ± 0.10	MATL	PART NO.:	TITLE:
.X $^{\circ}$ $\pm 2^{\circ}$	FINISH	127-2-XX10-XXXX-31X	2.54mmPitch SIP Adapters DIP
		APPD:	DWG NO.:
		CHKD:	EP-C-127-8002-301
		DR: Jeff Zhou	SCALE SHEET REV.
			1:1 I/1 A0

THESE DRAWINGS AND SPECIFICATIONS ARE THE PROPERTY OF JUNHAO ENGINEERING CO.LTD AND SHALL NOT BE REPRODUCED COPIED OR USED IN ANY MANNER WITHOUT THE PRIOR WRITTEN CONSENT OF JUNHAO ENGINEERING CO.LTD

